

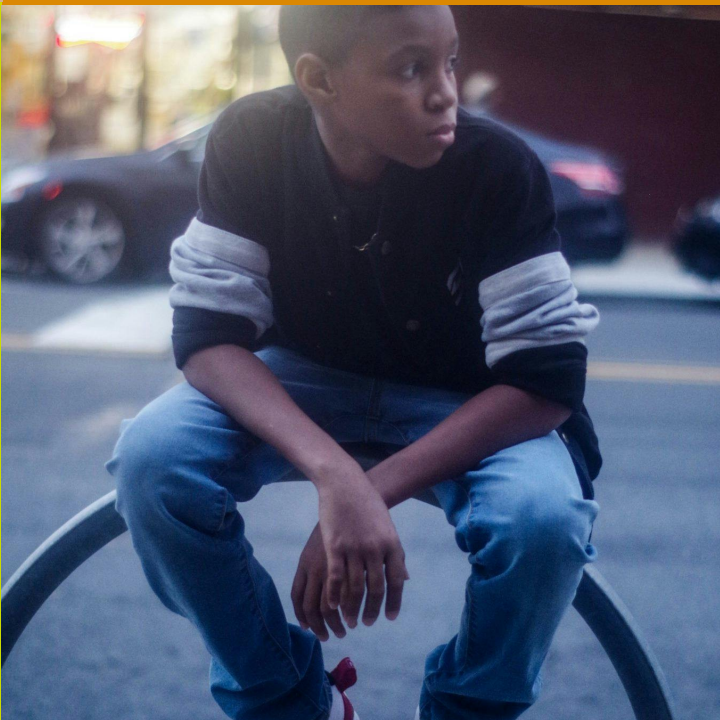
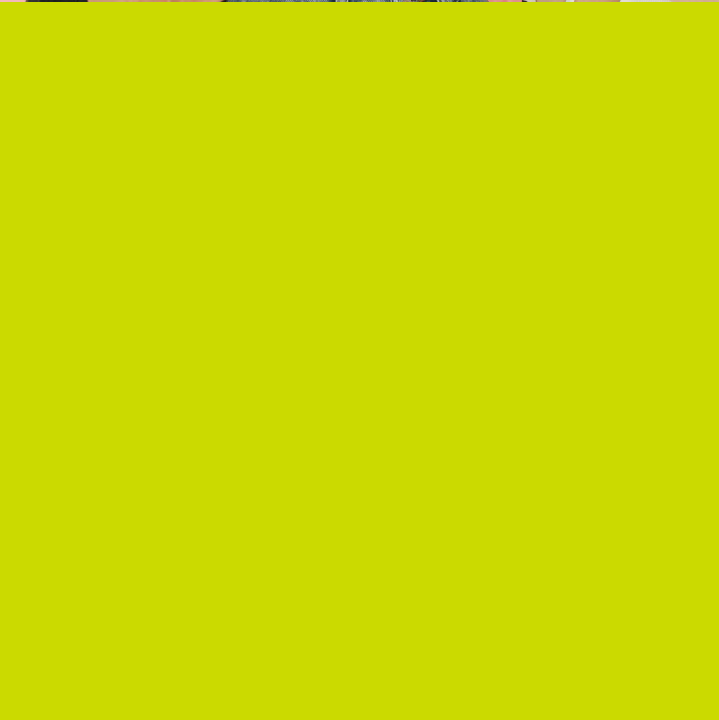
# *Turning the Spigot Off:* Mobilizing Schools to Support Secondary Prevention of Substance Use and Co- Occurring Other Mental Health Disorders



Randi M. Schuster, PhD

Associate Professor, Harvard Medical School

Director of School-Based Research and Program Development,  
MGH Center for Addiction Medicine



# Ongoing Youth Mental Health Crisis

- 40% increase in persistent feelings of sadness
- 36% increase in youth seriously considering suicide
- 44% increase in youth with a suicide plan

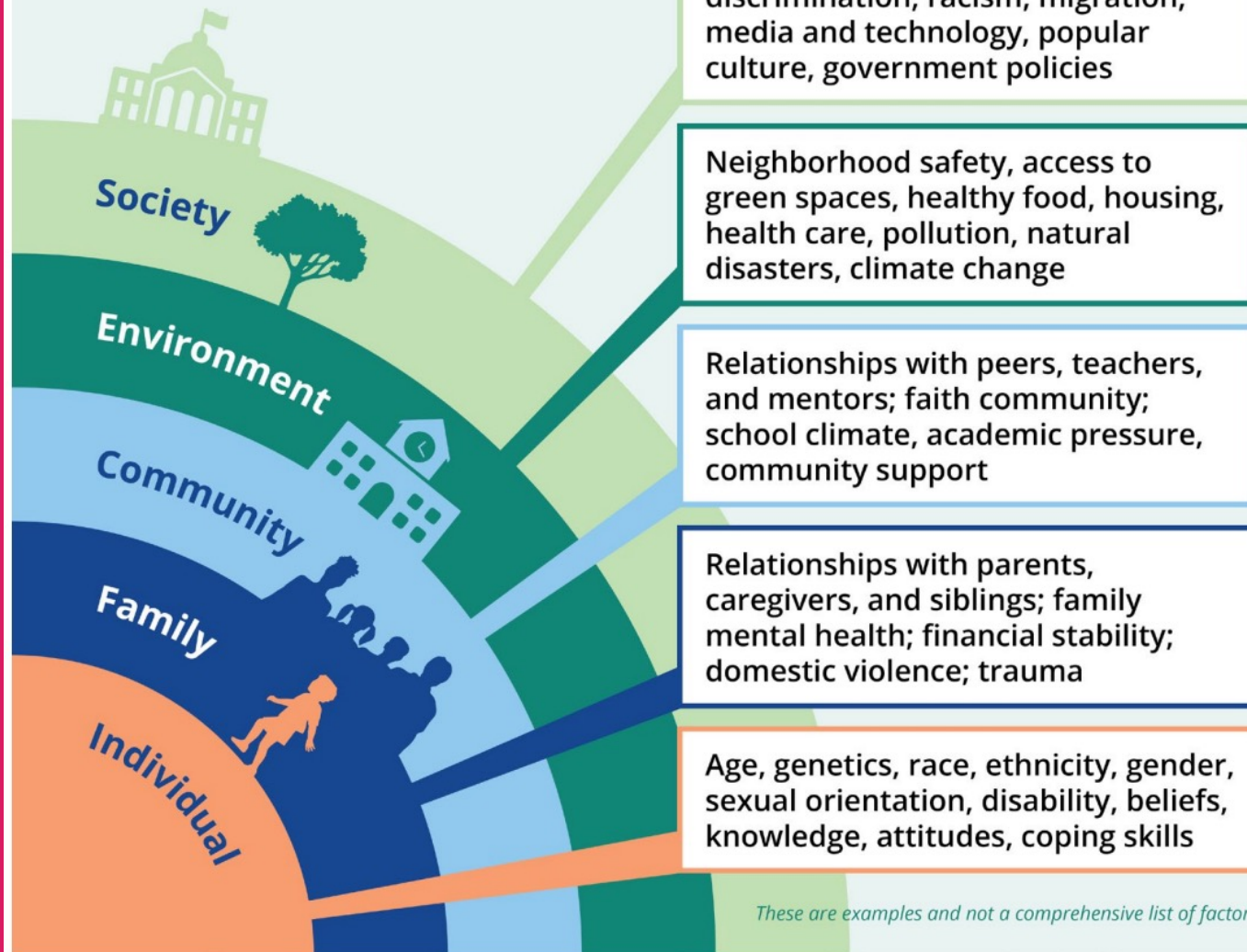
YRBS, 2020

# Contributors

## FACTORS THAT CAN SHAPE THE MENTAL HEALTH OF YOUNG PEOPLE



Source: Adapted from WHO's *Determinants of Adolescent Health Development: An Ecological Model*, 2014 and Bronfenbrenner & Ceci (1994)

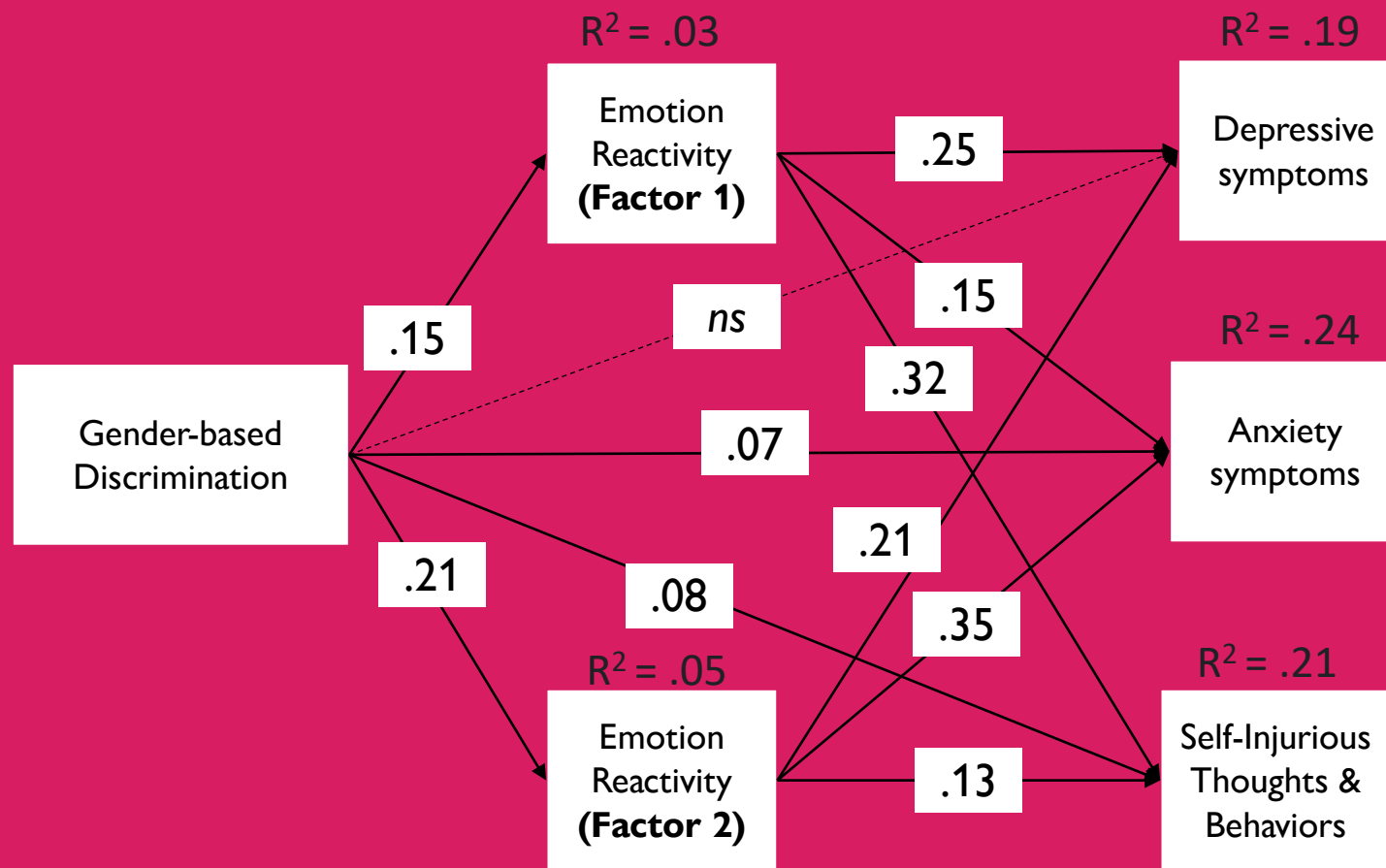




## Interaction between SD and GD identities on:

- Depressive symptoms (OR=2.81)
- Anxiety symptoms (OR=4.36)
- Suicidal thoughts (OR=2.88)
- Suicide plan (OR=2.32)
- Suicide attempt (OR=1.80)
- Non-suicidal self-injury (OR=3.67)

## Path analysis using a two-dimensional model of emotional reactivity



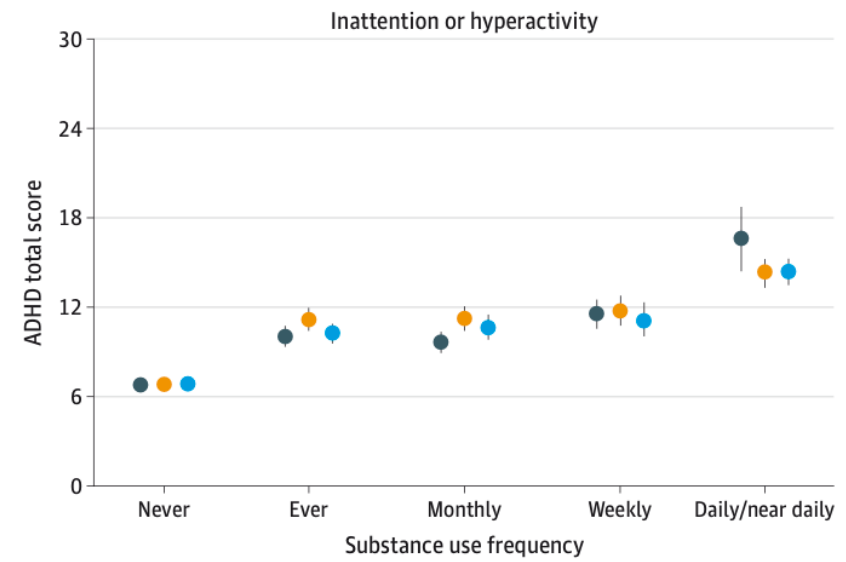
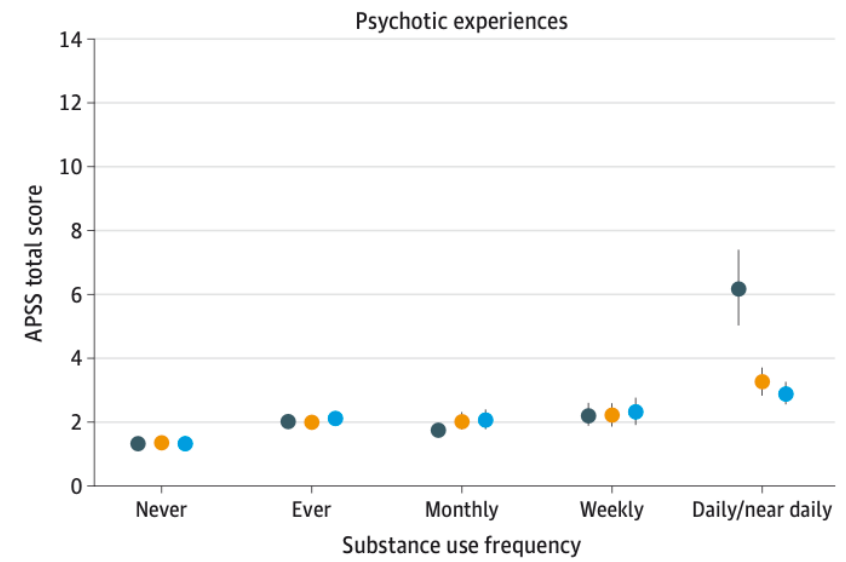
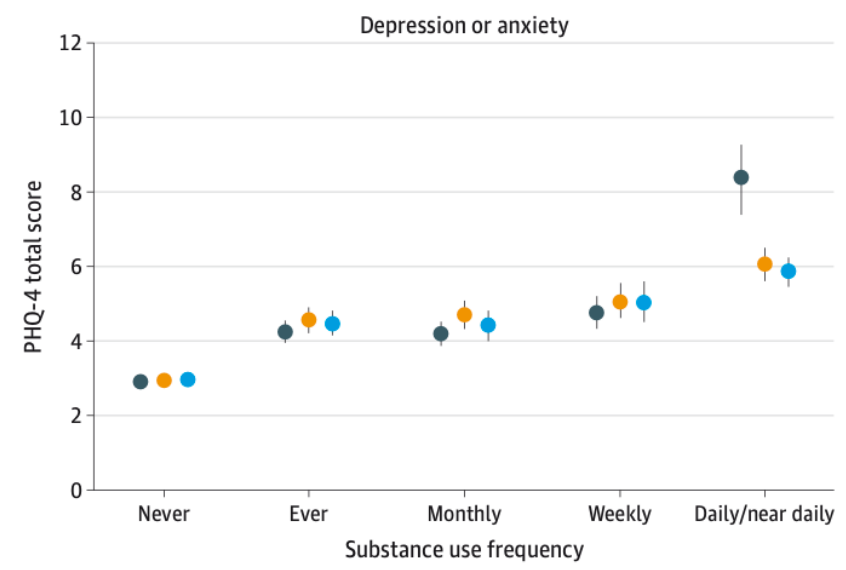
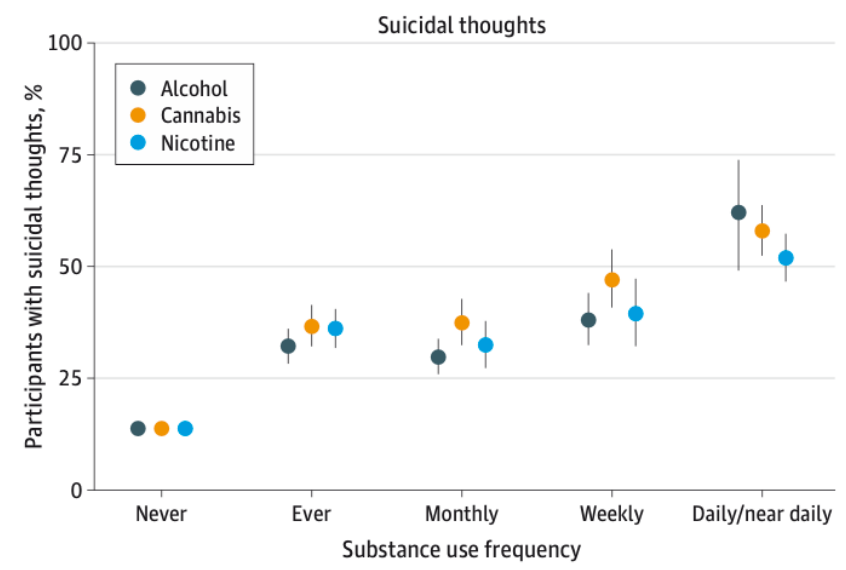
Covariances were calculated but not shown for simplicity.  
Age was entered as a covariates but is not show for simplicity.

# MH and SU Co-Morbidities

Tervo-Clemmens et al.,  
2024; JAMA Pediatrics

Figure. Associations Between Substance Use Frequency and Self-Reported Mental Health Symptoms in 2 Independent Samples of Adolescents

A Substance use and risk factor survey





***Problem:***  
**Persistent youth  
mental health crisis  
with inadequate  
attention to  
prevention**



Why are schools part of the solution?



# 1. Critical access point to improve equity

- No-show rates for initial intake MH appointments range from 48-62%
- 40-60% of children receiving outpatient MH services attend few sessions and drop out quickly
- Schools provide greater access to mental health services

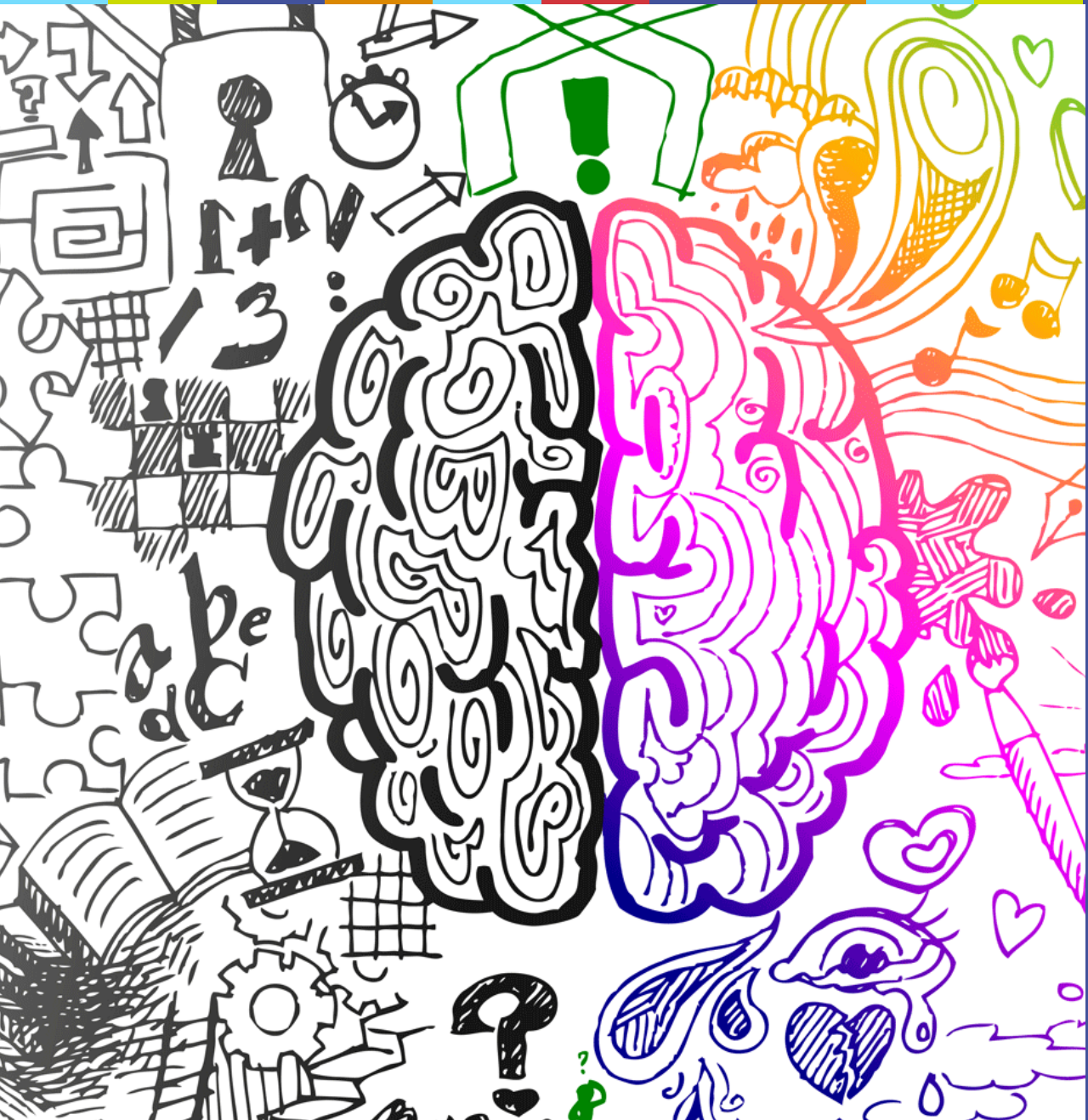


## 2. Opportunity to enhance connectedness and reduce stigma



### 3. Potential to leverage proclivity for social contagion for good





**4. Dense contact and historical relationships allow for intensive monitoring during sensitive developmental windows when progression of symptoms can occur quickly.**

# The MTSS Triangle





## Universal Screening

**~20% of kids asked for connection to school-based support**

**Disproportionately LGBTQIA+, REM**

**20% endorsed past year SI (and 20% of those with past year SI opted in to extra support)**

**~40% did not talk to *anyone* (formal or informal supports) in the past year about MH**

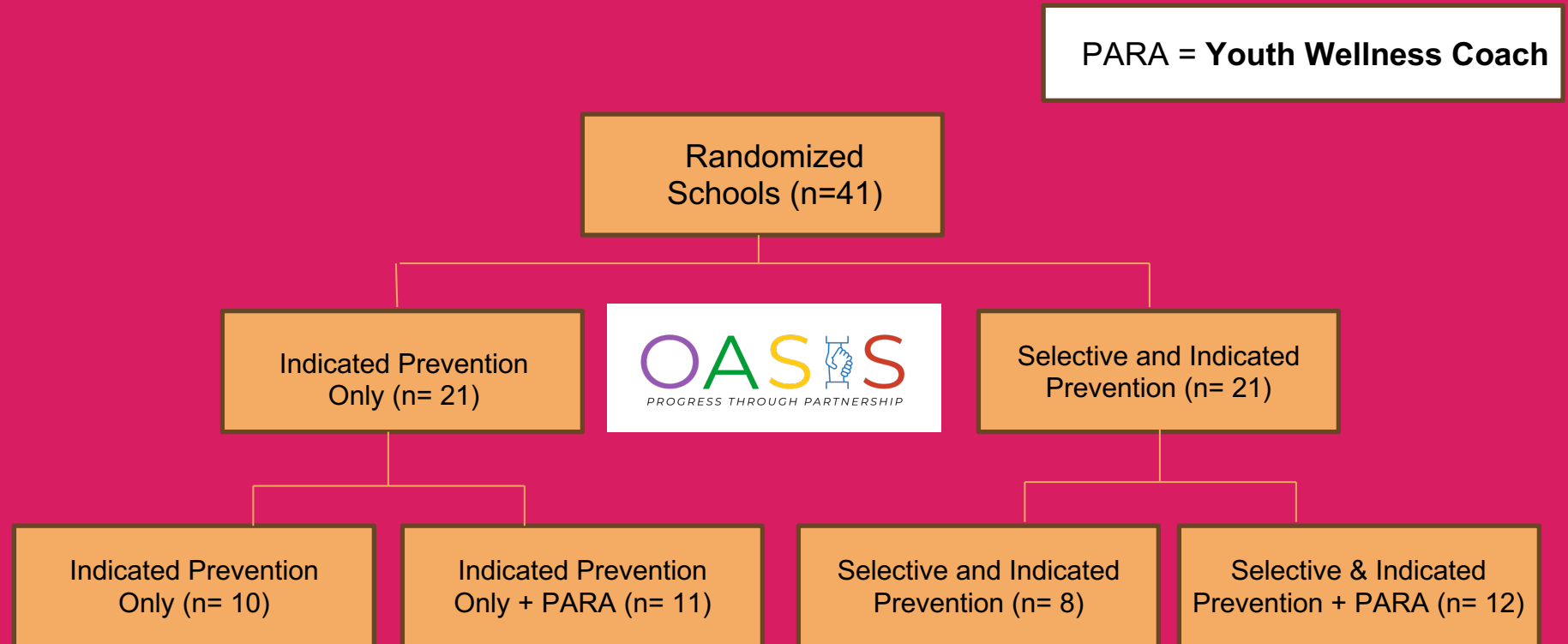
**How to make sustainable for schools?**

# Optimizing and Advancing SBIRT in Schools (OASIS)

## What is SBIRT: Screening, Brief Intervention, and Referral to Treatment

Originated in Emergency Rooms (clinical settings)

State mandated in public middle schools and high schools in MA since 2016





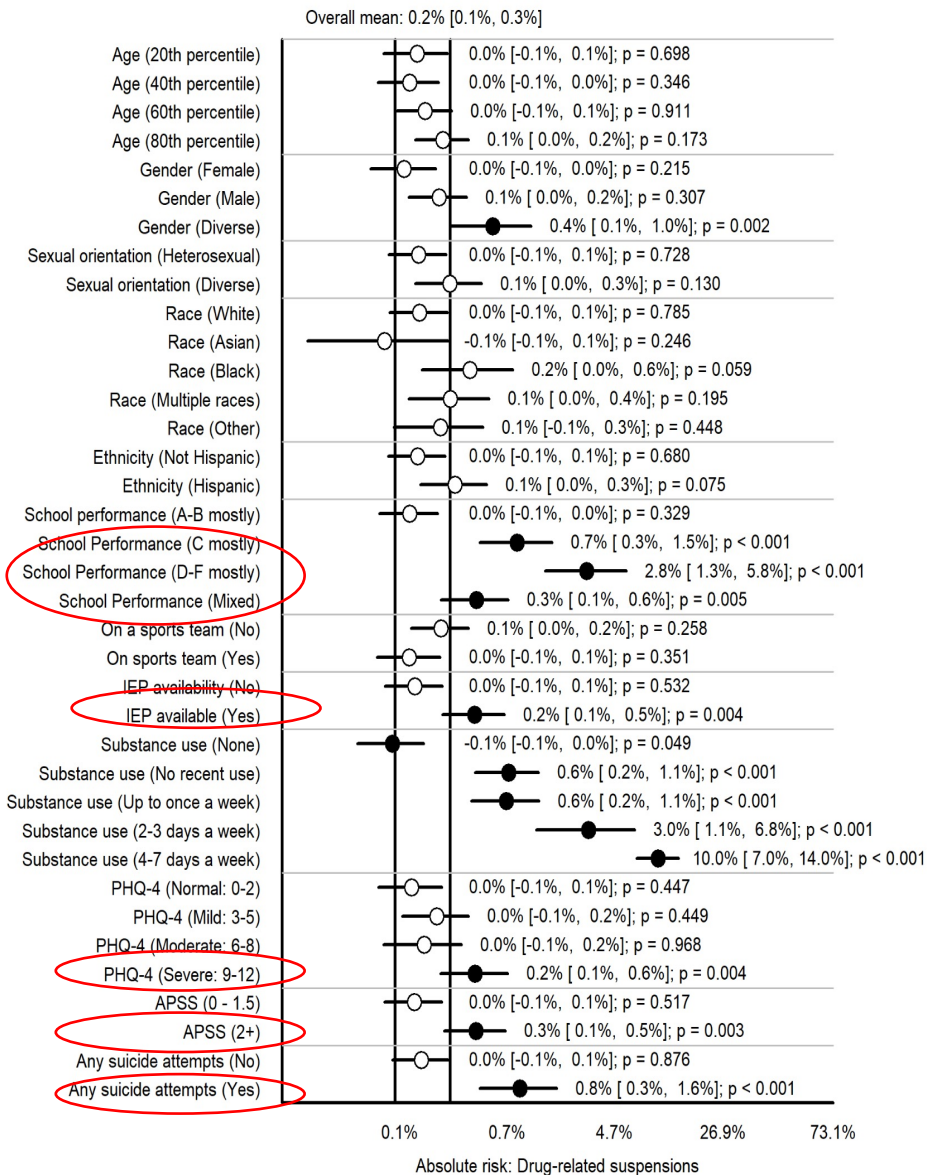
**In the past school year...**

**4100 students conducted SBIRT screening with a YWC**

**Rates of SU disclosure are 2-fold higher**

**95% (vs 58%) answered honestly**





# Interrupting the School-to-Prison Pipeline via Alternatives to Punishment

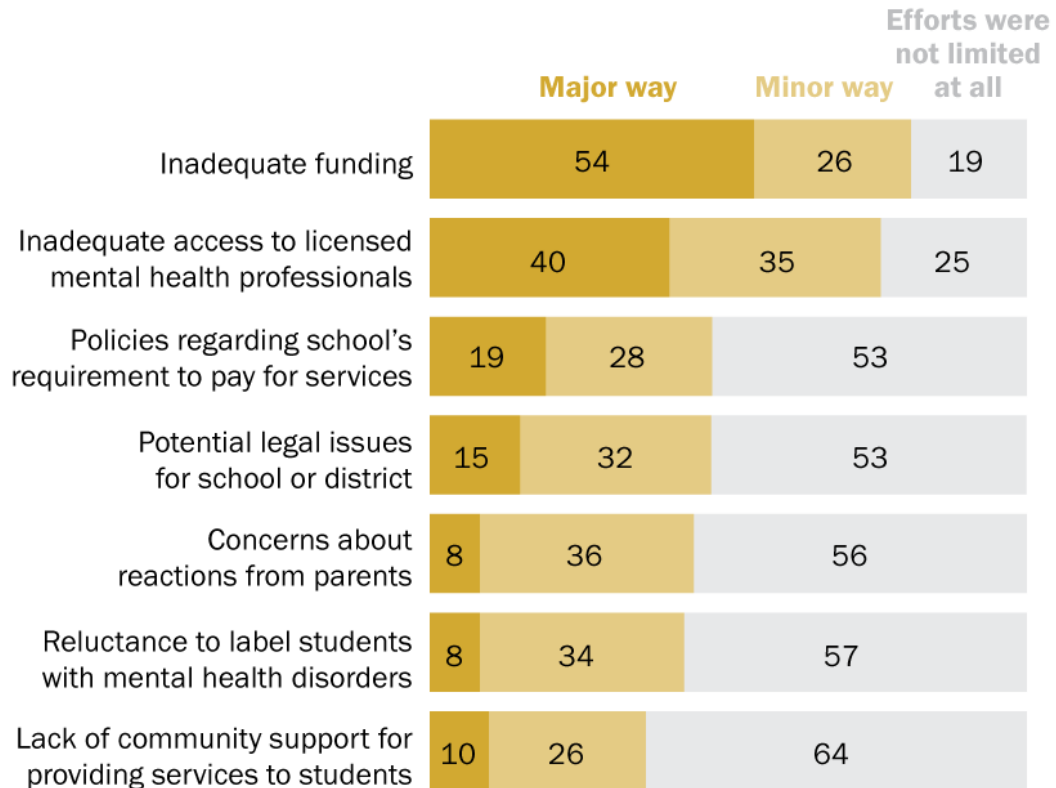
# The iDECIDE Basics

- State-funded low-touch, tier 2 intervention for students caught violating school substance use policy
- Drug agnostic
- Youth centered, skills-based, and without a focus on abstinence
- LMS hosted
- Available in multiple languages
- Delivered by trained facilitators; lay staff encouraged!
- 4 module interactive, multimedia curriculum:
  - Teen Brain Development, Neurobiology of Addiction, and Industry Tactics
  - Motives for Use and Specific Drug Effects
  - Identifying Triggers and Healthy Alternatives
  - Core Values and Setting Goals
- In nearly 400 middle and high schools statewide, with over 1000 facilitators trained
- Caregiver curriculum coming in August 2024

# Implementation Challenges

## Inadequate funding, access to licensed professionals majorly limited schools' ability to provide students with mental health services

*% of U.S. public schools saying that each factor limited their efforts to provide mental health services to students in a \_\_\_ during the 2019-20 school year*



Note: Shares may not sum to 100 due to rounding.

Source: U.S. Department of Education, National Center for Education Statistics, 2019-20 School Survey on Crime and Safety (SSOCS).

# Thank you!!

Please reach out with any questions or thoughts...



617-643-6673



[RSCHUSTER@MGH.HARVARD.EDU](mailto:RSCHUSTER@MGH.HARVARD.EDU)



@RANDIMSCHUSTER