

ABOUT OUR PROGRAM

Individuals with schizophrenia often face triple jeopardy: a devastating mental illness, co-morbid medical problems, and co-occurring substance use. In addition, they are disadvantaged in their employment, educational attainment, interpersonal relationships, and other social determinations of health. UMass Mind Clinical and Research Program aims to develop innovative intervention strategies to promote the whole person health. Through our research, clinical services, and community initiatives, we strive to improve the quality of life and health equity in this patient population.



WEBSITE

www.umassmed.edu/umass-mind



SOCIAL MEDIA

Instagram: @umassmind
Facebook: @umassmind

DOCKET # STUDY00001020

INTERESTED? CONTACT US!



+1 508-856-Mind (6463)



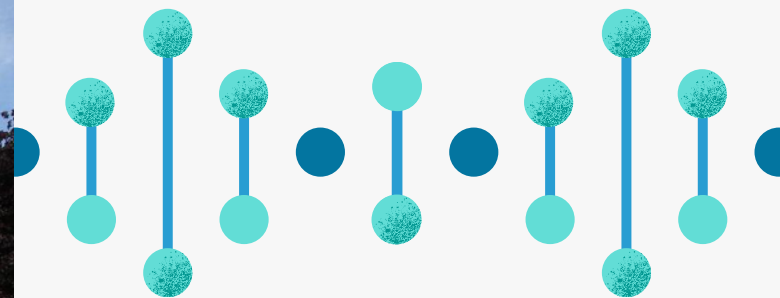
Mind@umassmed.edu



All study visits happen at:
26 Queen Street, Worcester
MA 01610



EFFECTS OF DEUTETRABENAZINE ON TARDIVE DYSKINESIA



UMass Mind
Clinical and Research Program

Beautiful Mind | Productive Life

Email: Mind@umassmed.edu
Phone: (508) 856-Mind (6463)



ABOUT THE STUDY

The purpose of this study is to evaluate the real-world effectiveness of deutetrabenazine (AUSTEDO®), an FDA-approved medication, on tardive dyskinesia (TD).

- TD is a movement disorder that involves involuntary body movements.
- This is an observational study, meaning that the medication will be prescribed as part of your routine care.

WHAT THE STUDY INVOLVES

- You will take the medication as prescribed by your regular doctor. You can be on the medication before you start the study.
- You will meet with study staff to answer questions about the mental and physical symptoms you might be experiencing.
- You will meet with the study staff every 1-3 months over the course of 3 years. These visits can be in-person or remote.
- You will be compensated for your time.

Taking part in this research is voluntary and completely up to you. You are free to say no or leave the research at any time.



WHO CAN BE IN THE STUDY?

We are looking for individuals who are:

- 18 or older
- English speaking
- Diagnosed with Tardive Dyskinesia (TD)